

GRAND ISLAND – TRANSIT NEEDS ASSESSMENT AND FEASIBILITY STUDY

APRIL 2017

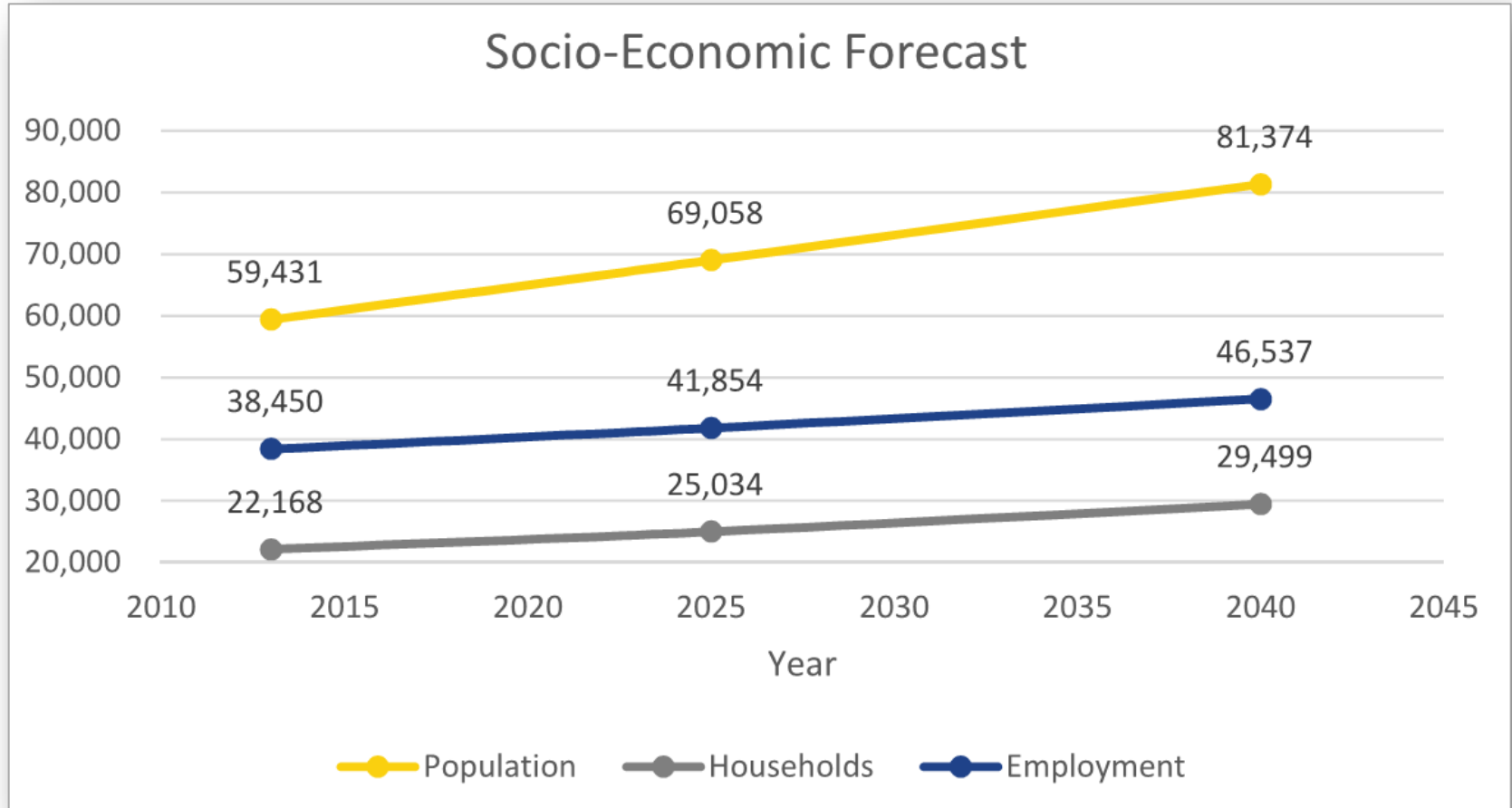


Study Overview

- Community Profile
- Review existing transit services in Grand Island and Hall County
- Analyze transit demand
- Develop short-term public transportation options
- Prepare a 3-5 year plan, budget, and implementation plan for the region

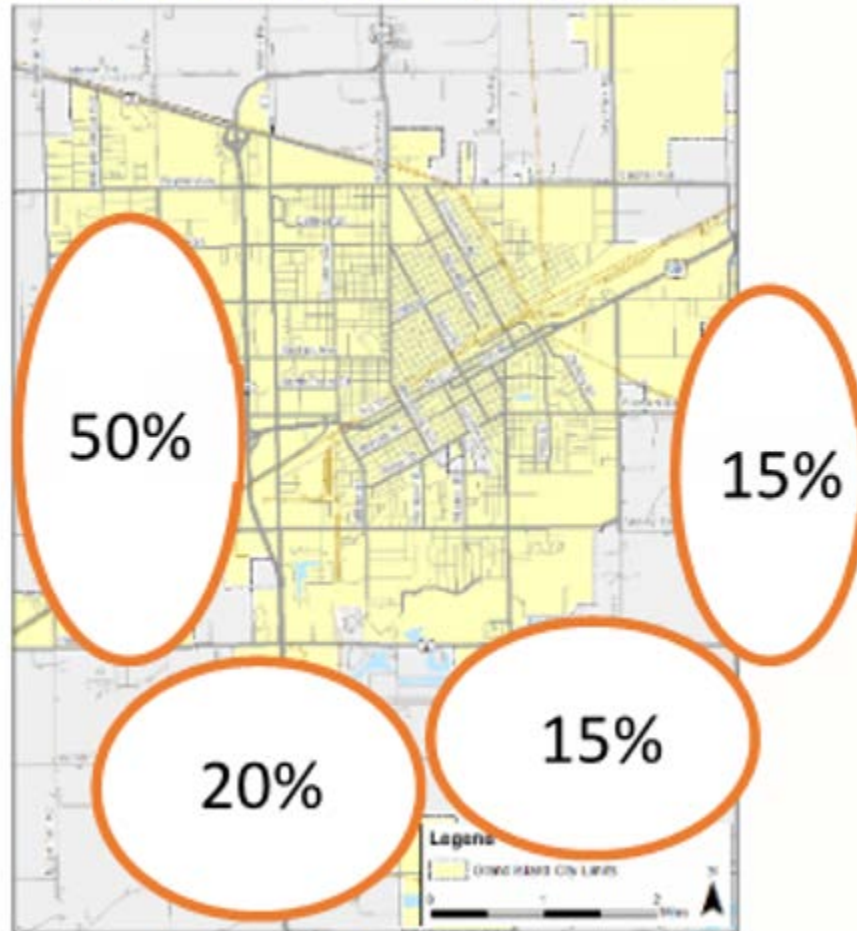


Market Assessment – Our Community

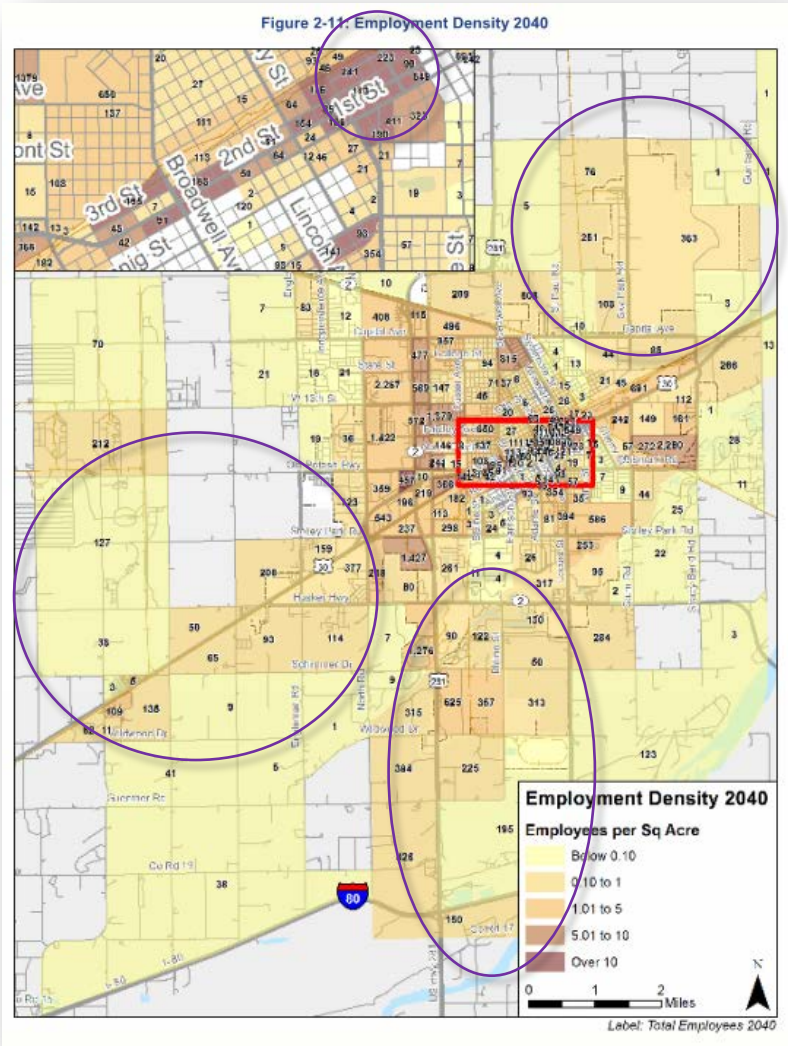


Population

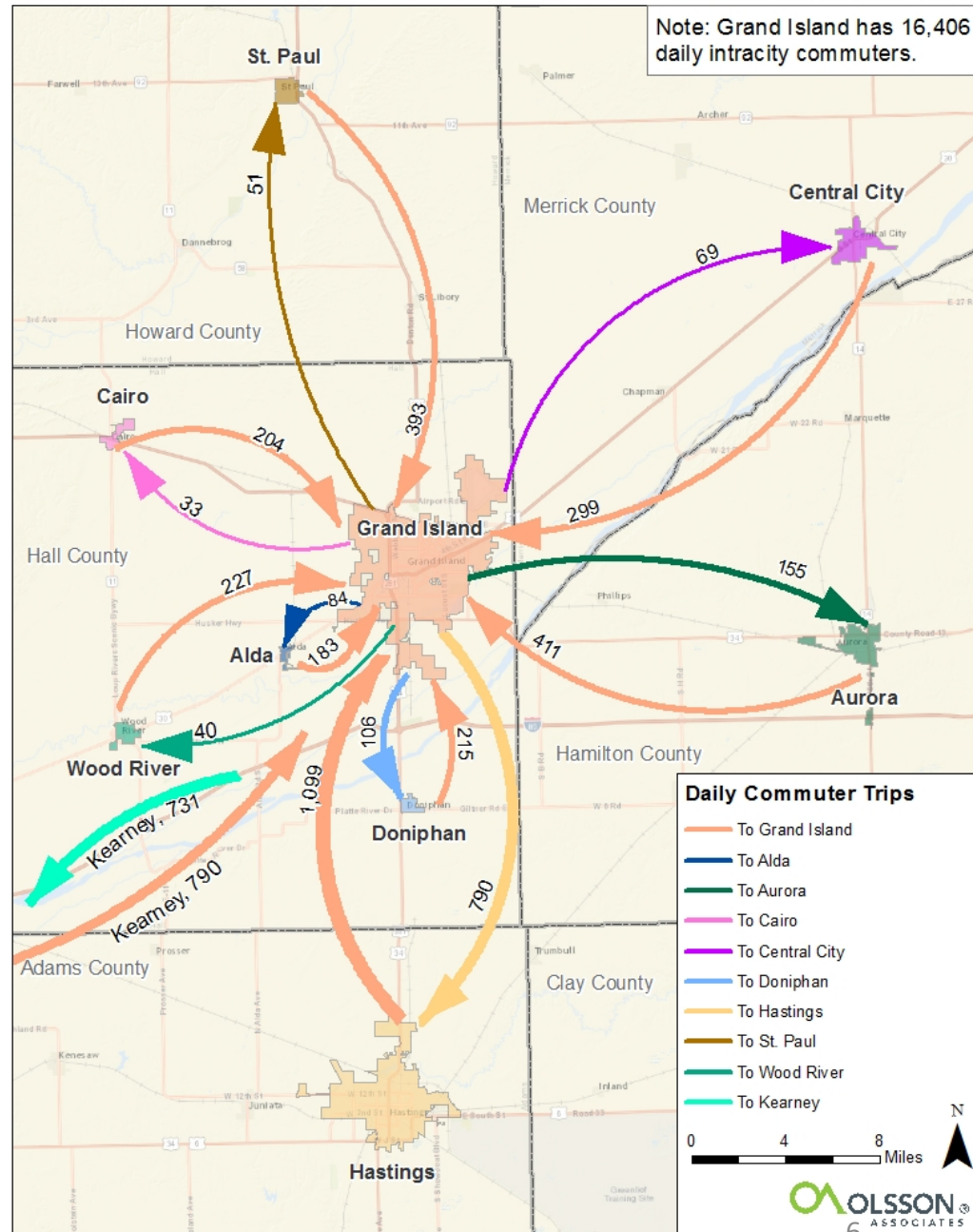
Figure 2-5: Future Household Distribution



Employment



Travel Patterns



Source: 2014 U.S. Census Bureau, OnTheMap Application and LEHD Origin-Destination Employment Statistics.

Existing Providers

■ Hall County Public Transportation

- Monday – Friday, 6a-5p
- 24-hr. advance reservations
- \$2 base fare
- 35,000 annual one-way trips
- \$490,000 annual operating budget

■ Burlington Trailways

- Eastbound/Westbound routes
- 7 days week, wifi on all buses
- 1250a, 305a, 530p
- Approximately 50 boarding/deboardings month
- Ex: fare – GI to Des Moines - \$75 one-way
- Popular destinations
 - Lincoln, Omaha, Des Moines, Indianapolis



Existing Providers

- **Central City Mini Bus – Merrick County**
 - Monday-Friday, 7a-4p
 - 24-hr. advance reservation
 - \$10 round-trip to GI, first Monday of every month
 - Medical transports – primary trips to GI (90%)
 - Many kids, assisted living passengers, medical needs
- **Navigator Airport Express**
 - Based in Kearney
 - 6 days week from Grand Island
 - To York, Lincoln, Omaha, Kearney
 - Avg fare: GI to Omaha - \$62 one-way



Existing Providers

- **Ponca Express**

- Majority of trips to GI are to airport
- Travel every other week to GI
- \$5 per one-way trip, looking to increase

- **Ryde Transit**

- To GI for medical/VA
- Approximately 10,000 trips from Hall County
 - Primarily Aurora and Franklin
- Fare is \$8 per one-way trip to GI

- **Private Providers**

- Taxi
- Uber
- Other



Transit Goals and Objectives

1. *Efficiently provide mobility options to area residents.*
2. *Enhance economic activity by improving access to employment for area residents.*
3. *Coordinate with local organizations for public transportation options, while being good stewards of the public dollar.*



Community Engagement

- Residents of Grand Island/Hall County
- Governmental agencies
- Transportation providers
- Human service agencies
- Major businesses and organizations
- Elected officials
- Bicycle/Pedestrian representatives
- Grow Grand Island representatives
- Educational institutions
- Faith-based community
- Elderly services representatives
- Ethnic heritage representatives



Community Discussion Questions

1. How would you rate the importance of transit for Grand Island and Hall County today?
2. How would you rate the importance of transit as Grand Island and Hall County continue to grow?
3. How effective do you feel Hall County Public Transportation is now?

1

2

3

4

5 =
great



Community Discussion Questions

4. What is the greatest benefit of having Hall County Public Transit in our community?
5. If you are familiar with the service, what are strengths of the transit service?
6. What could Hall County Public Transportation do to enhance existing services?
7. What do you think are the most important transit challenges to be addressed in the short-term of 1-3 years?
8. What specific transit services should be considered for the near future?

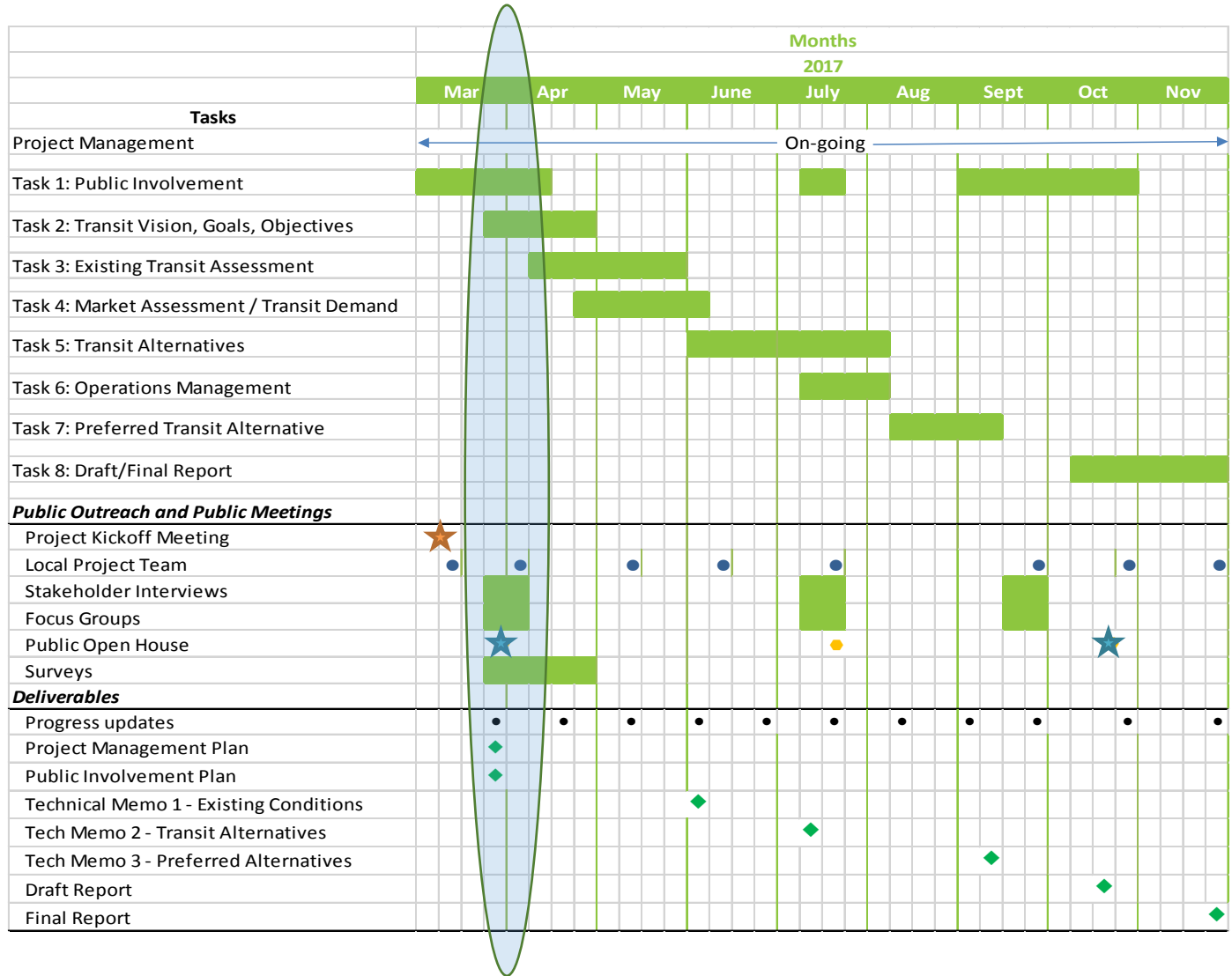


Community Discussion Questions

9. What areas within the region are likely to need public transportation the most?
10. If you or someone you know used public transit where would you need it to go? To/From where?
11. What are some of the best ways to include our citizens into this study effort?
12. How did you first hear about the transit study?



Next Steps



Regional Transit Needs Assessment and Feasibility Study

April 2017



Thank YOU!!



For Additional Information - Project Contact Person:

- ❖ Allan Zafft, MPO Program Manager; 308.389.0273 ph; allanz@grand-island.com
- ❖ City of Grand Island
- ❖ 100 East First Street, Box 1968, Grand Island, NE 68802
- ❖ For more information, visit the website listed below.



www.grand-island.com/GIAMPO

