



North Road

IMPROVEMENT PROJECT

13th Street to Highway 2

THE NEED FOR IMPROVEMENT

Safety is becoming an issue along North Road with increased numbers of crashes.

- Northwest High School's growth has contributed to increased traffic and traffic delays.
- Very little sidewalk exists along this corridor, which increase the risk of injury for pedestrians.
- Trail crossings need to be safely incorporated into the new roadway design.

The age of North Road is nearing the end of its serviceable life and needs to be replaced.

- Asphalt experiences more maintenance issues and cost.
- Drainage ditches are not convenient to maintain in an area that has become urbanized.

Northwest Grand Island is experiencing continuous growth leading North Road commuters to experience unnecessary traffic congestion.

- North Road has been identified for improvement in the city's long range plan.
- Commercial and residential development in the area over the past 20 years is placing more demand on North Road than for what it was designed.
- More commercial and residential growth is envisioned for this area.



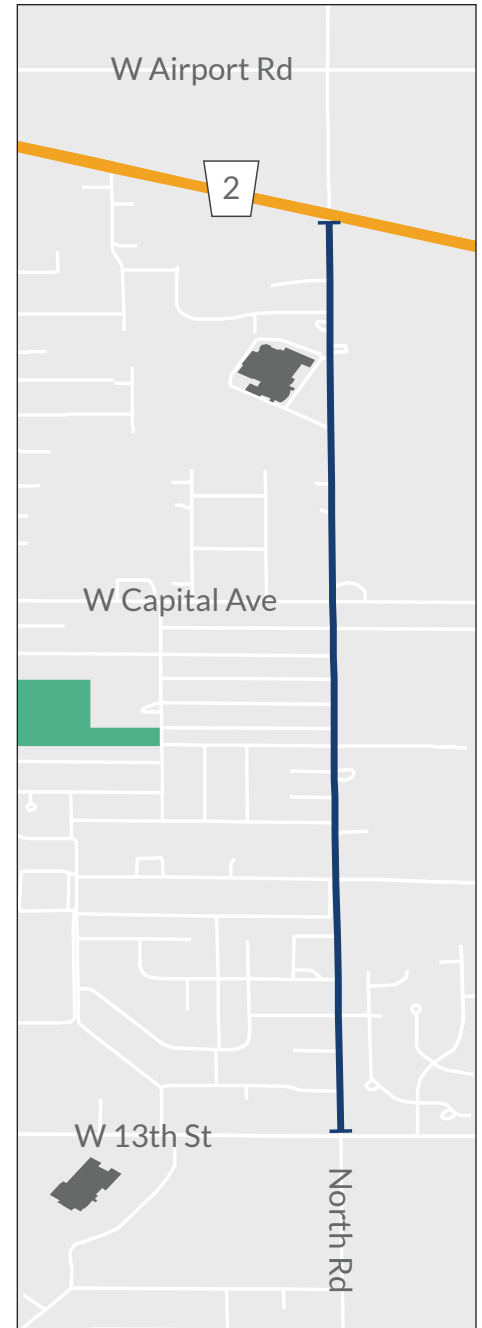
Looking northeast at North Road and Highway 2

The existing two-lane configuration can create unsafe left-turning conditions and unnecessary traffic delays.



Looking south from W Capital Ave.

The existing roadway is deteriorating and most of North Road lack sidewalks.



FOR MORE INFORMATION

Visit www.DriveGI.com or contact Tim Golka, City Project Manager, at (308) 389-0263 or timg@grand-island.com.



THE PLANNED IMPROVEMENTS



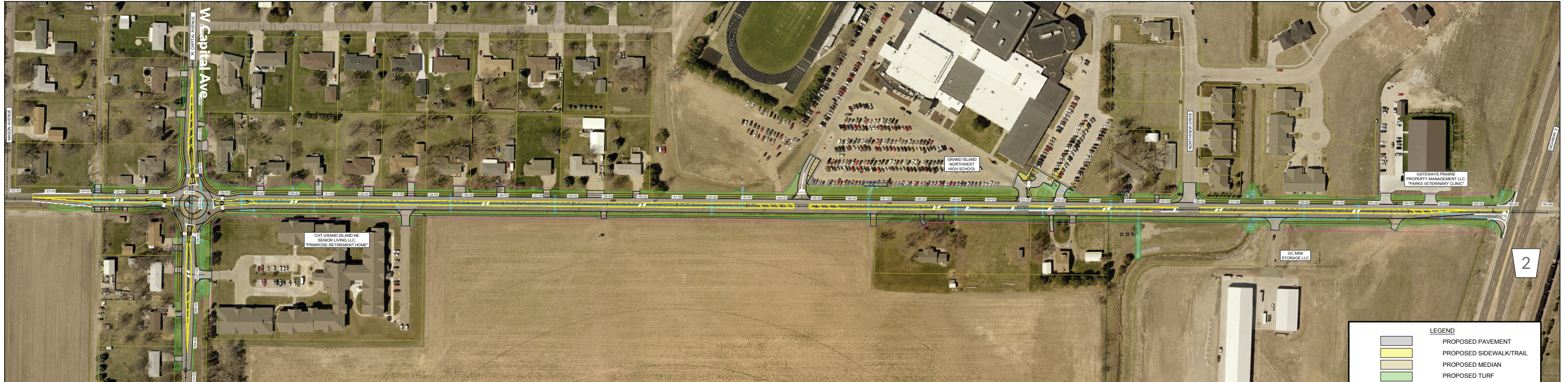
Improving safety is a priority for all design improvements.

- The center turning lane feature reduces rear-end crashes.
- Roundabouts increase safety by reducing the severity of crashes at intersections.
- Pedestrian safety is greatly enhanced with the inclusion of sidewalks on both sides of the road in all currently developed areas, and trail crossing options will enhance safety as well.

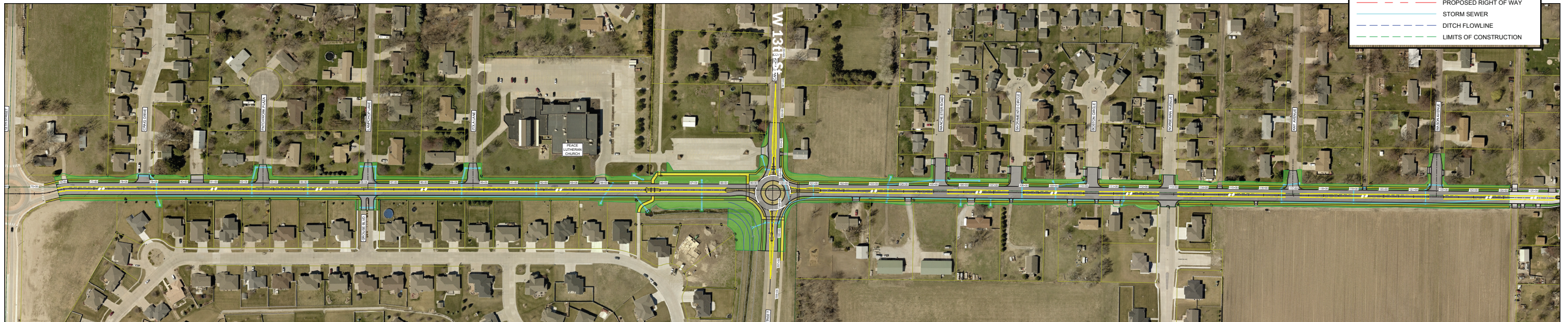
Long-term maintenance costs will be reduced with this new design.

- Concrete last longer and will be used instead of asphalt for the new roadway.
- The new roadway is being built accommodated future growth and traffic demands.
- Reducing the number of ditches with an urban stormwater drainage system is a benefit.

PHASE 1
Anticipated construction: 2020



PHASE 2
Anticipated construction: 2021

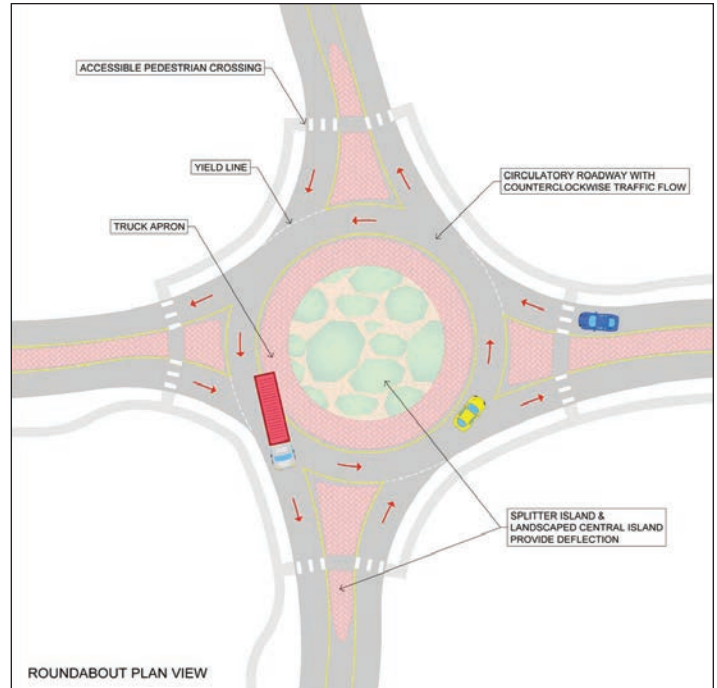


ALL ABOUT ROUNDABOUTS

WHAT IS A ROUNDABOUT?

A modern roundabout is an unsignalized circular intersection with the following key design characteristics:

- Yield on entry; priority to circulating vehicles
- Pedestrian access & crossing one direction of travel at a time
- Reduce visibility conflicts due to parking
- Truck apron
- Landscaped central island
- Deflection of vehicle paths to reduce speed



WHAT ARE THE BENEFITS?

- **Enhanced Safety:** Roundabouts reduce the frequency of severe and fatal crashes.

	Traditional Intersection	Roundabout
Potential Vehicle-to-Vehicle Conflict Points	32	8
Potential Pedestrian-Vehicle Conflict Points	16	8

- **Improved Capacity and Efficiency:** All vehicles must yield when approaching a roundabout, but when the path is clear vehicles are not required to stop. This reduces individual delays and idling engines.
- **Community:** The design of a roundabouts helps to calm traffic, reducing excessive vehicle speeds. Roundabouts also offer enhanced aesthetics opportunities.
- **Reduced Travel Times and Delays** with completion of networked roundabouts.

PROJECT CONTACTS

Tim Golka
City of Grand Island
308-385-5444
timg@grand-island.com

Ryan Kavan
JEO Consulting Group
308-381-7428
rkavan@jeo.com