

Olsson Associates,
Consulting Engineers
201 East 2nd Street, P.O. Box 1072
Grand Island, Nebraska 68802
August 10, 2012

ADDENDUM NO. 1

Sewer Project 2011-S-1A, Lift Station No. 7 Improvements
Grand Island, Nebraska
OA Project # 011-2347

TO ALL WHO HAVE RECEIVED PLANS AND SPECIFICATIONS FOR THE REFERENCED PROJECT.

This addendum supersedes all conflicting portions of the drawings and specifications. Contractor shall include all omissions, additions, and adjustments of all trades as may be necessary because of each change, substitution, or omission. Such omission, addition, or adjustment shall conform to recognized and accepted engineering practice.

1. Refer to the Specifications, Standard Plan Drawings

Add the attached Plan 133 – Joint Encasement to the Standard Plan Drawings.

2. Refer to the Plans, Sheet 2 of 26 – General Notes Sheet

Add the following notes to the “Sequencing of Construction” section

2. The Contractor is responsible for the operation and maintenance of the bypass pumping system and shall continuously monitor the bypass pumping system while in operation. The Contractor shall be responsible for any damages to private property that may occur due to a back-up of the sanitary sewer system resulting from operational problems (failure or lack of capacity) of the bypass pumping system.

3. The anticipated total dynamic head (TDH) requirements of the bypass pumping system at 300 gpm is 29.5 feet and at 400 gpm is 38.5 feet.

3. Refer to the Plans, Sheet 5 of 26 - Site Plan – Piping Plan

Revise the note to read:
Proposed 6” By-Pass Pumping Piping

Add the following note to the Sheet:

The Contractor is responsible for installing the 4” electrical conduits (with pull strings) shown. The City of Grand Island Utilities Department is responsible for installing the primary conductors in the conduits. The Contractor is responsible for coordinating the location and installation with the City of Grand Island Utilities Department. Refer to sheets 19-22 for additional details.

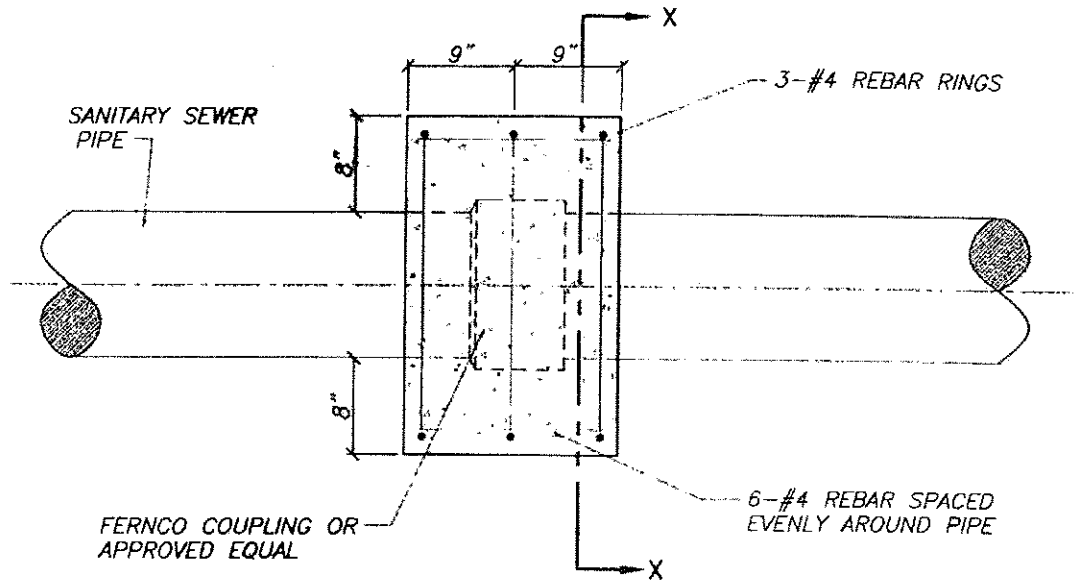
4. Refer to the Plans, Sheet 24 of 26 – Influent Sewer Manhole Plan and Details

Add the following note to the plan sheet:

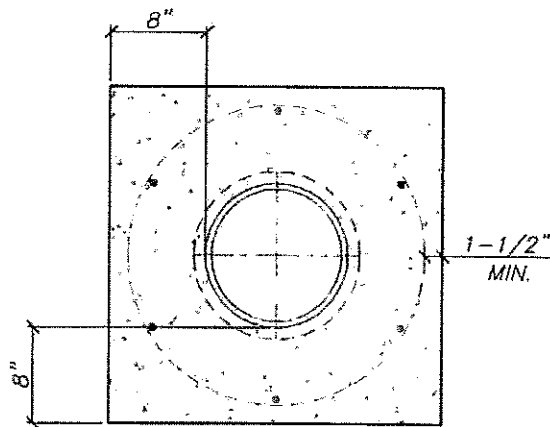
“The influent sewer manhole is to be a Type 2 (Manhole with ConShield) as per the City of Grand Island specifications. A factory made monolithic manhole base and barrel section is acceptable as long as the section meets the requirements of the plans and specifications.

A 12” crushed concrete base course (compacted) is to be placed under the manhole base.

Each Bidder must acknowledge receipt of all Addenda in the space provided on the Checklist for Bid Submission and Contractor Bid Form.



PLAN
NO SCALE



SECTION X-X
NO SCALE

PIPE DIA.	CONCRETE CUBIC YDS.	REBAR POUNDS
8"	0.2028	7.848
10"	0.2305	8.023
12"	0.2589	8.198
15"	0.3026	8.460
18"	0.3478	8.723

ENCASEMENT QUANTITIES

NOTES:

1. ALL JOINT ENCASEMENTS TO BE TYPE 47-B MODIFIED POURED CONCRETE AS PER DIVISION 2 "CONCRETE PAVING SPECIFICATIONS".

REV. 9/18/01